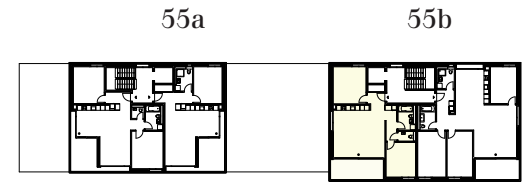
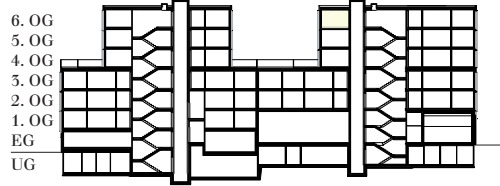
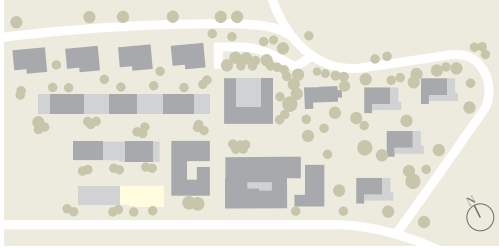


Liegenschaft	Haldengut-Areal, Winterthur
Haus	M2/Rychenbergstrasse 55b
Objekt	3.5-Zimmer-Wohnung
Etage/Lage	6. Obergeschoss
Fläche	86.2 m ²
Objektnummer	3516.02.0502

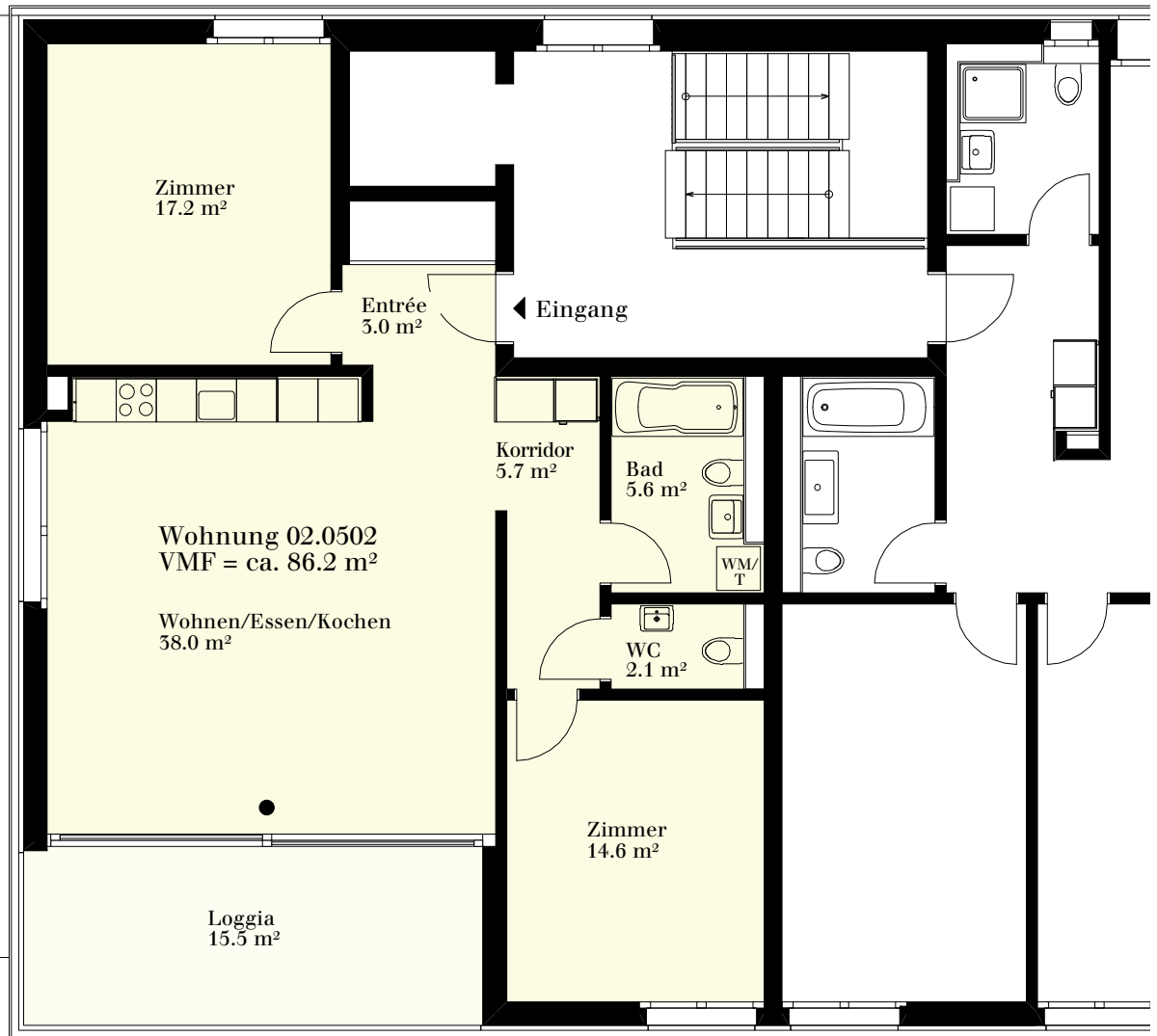


Situation

Schnitt

Übersicht

Grundriss
Massstab 1:100



0 1 2 3 4 5m

